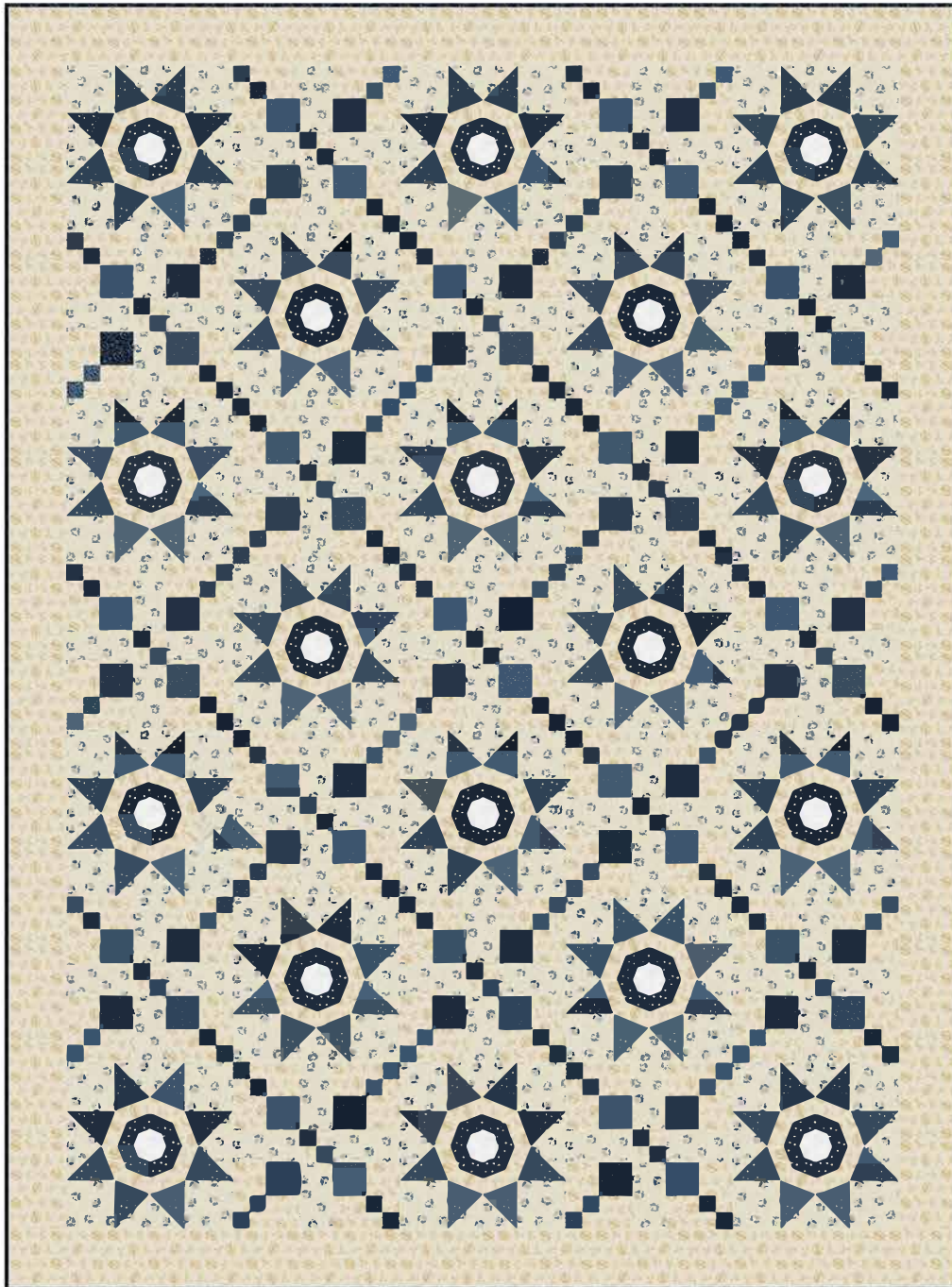


Compass Star

Designed by Wendy Sheppard
Featuring Rhapsody In Blue by Mary Koval

SIZE: 57" x 77"

FREE
PROJECT



THIS IS A DIGITAL REPRESENTATION OF THE QUILT TOP, FABRIC MAY VARY.

PLEASE NOTE: BEFORE MAKING YOUR PROJECT, CHECK FOR ANY PATTERN UPDATES AT WINDHAMFABRICS.COM'S FREE PROJECTS SECTION.



Compass Star

KEY	FABRIC	SKU	YD	CUTTING INSTRUCTIONS
A		42130-3 Cream	2-3/8	Chain blocks 5 (4 1/2" x 42"). Subcut 68 (2 1/2" x 4 1/2") rectangles. Star blocks 144 "A" and 144 "B" pieces from remaining fabric, using provided templates.
B		42129-2 Med Blue	7/8	Star blocks 72 "D" and 72 "E" pieces, using provided templates.
C		42129-4 Yellow	7/8	Star blocks 72 "D" and 72 "E" pieces, using provided templates.
D		31835S *White Solid	1/2	Star blocks 144 "H" pieces, using provided template.
E		42132-4 Yellow	1-7/8	Chain blocks 7 (1 1/2" x 42"). Reserve for chain piecing. 9 (2 1/2" x 42"). Subcut 136 (2 1/2" x 2 1/2") squares. Outer border 7 (4" x 42"). Piece strips and subcut 2 (4" x 57 1/2") and 2 (4" x 70 1/2") strips.
F		42129-1 Blue	1-1/4	Star blocks 72 "C", 72 "F", 72 "G", 72 "G" pieces using provided templates.
G		42133-1 Blue	1	Chain blocks 4 (1 1/2" x 42"). Reserve for chain piecing. 2 (2 1/2" x 42"). Subcut 34 (2 1/2" x 2 1/2") squares. For Binding: 1/2 yd cut into 2-1/4" strips. Piece strips to make a continuous binding strip.
H		42133-2 Med Blue	3/8	Chain blocks 3 (1 1/2" x 42"). Reserve for chain piecing. 2 (2 1/2" x 42"). Subcut 34 (2 1/2" x 2 1/2") squares.
		Backing	4-3/4	
				63" x 83" piece of batting



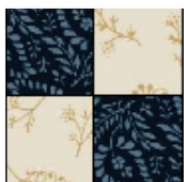
Compass Star

Constructing Chain Blocks

1. Four patch units.

Sew together 1 (1-1/2" x 42") **G** strip and 1 (1 1/2" x 42") **E** strip. Subcut pieced strips at 1 1/2" intervals. Make a total of (3) **E/G** and (2) **E/H** four-patch units.

Sew 2 subunits to make four-patch units.



Make a total of two **G** and two **H** four-patch units.



2. Corner units.

Arrange and sew together one **G** four patch unit, 2 (2 1/2" x 2 1/2") **E** squares and one **H** square to make a corner unit.



SQ to 4-1/2"

Make a total of 2 corner units in the following colorways:





Compass Star

3. Sew 2 (2 1/2" x 4 1/2") **A** rectangles to the opposite sides of one **G** four patch unit to make a row.



Sew 2 corner units to the opposite long sides of one (2 1/2" x 4 1/2") **A** rectangle to make a row, as shown. Repeat to make a total of 2 rows.



4. Sew rows together to complete 1 block.



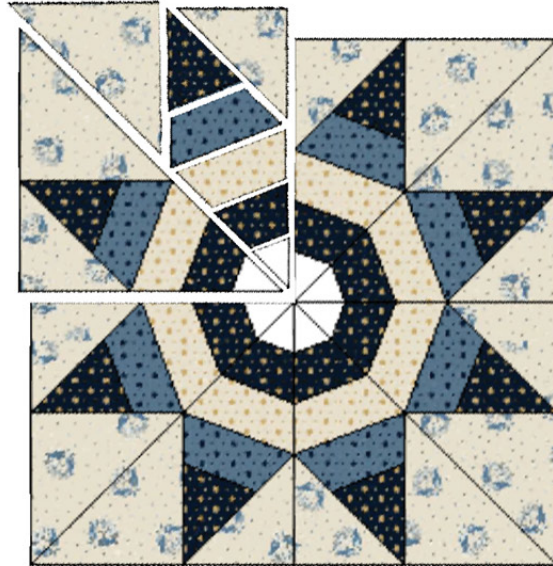
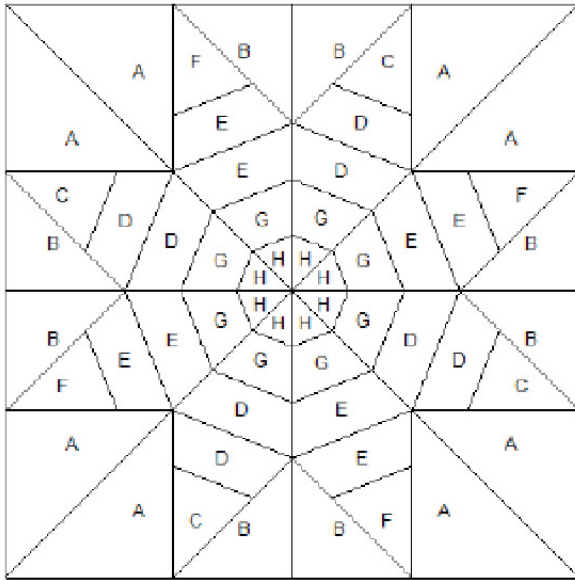
SQ to 10-1/2"

Repeat to make a total of 17 blocks.



Compass Star

Constructing Star Blocks



1. Refer to the block diagrams for fabric placements, constructing star blocks by making 1/8 section of each block, and sewing all the sections together.
2. Repeat to make a total of 18 blocks.

Quilt Center Assembly

1. Rows 1, 3, 5, 7



2. Rows 2, 4, 6



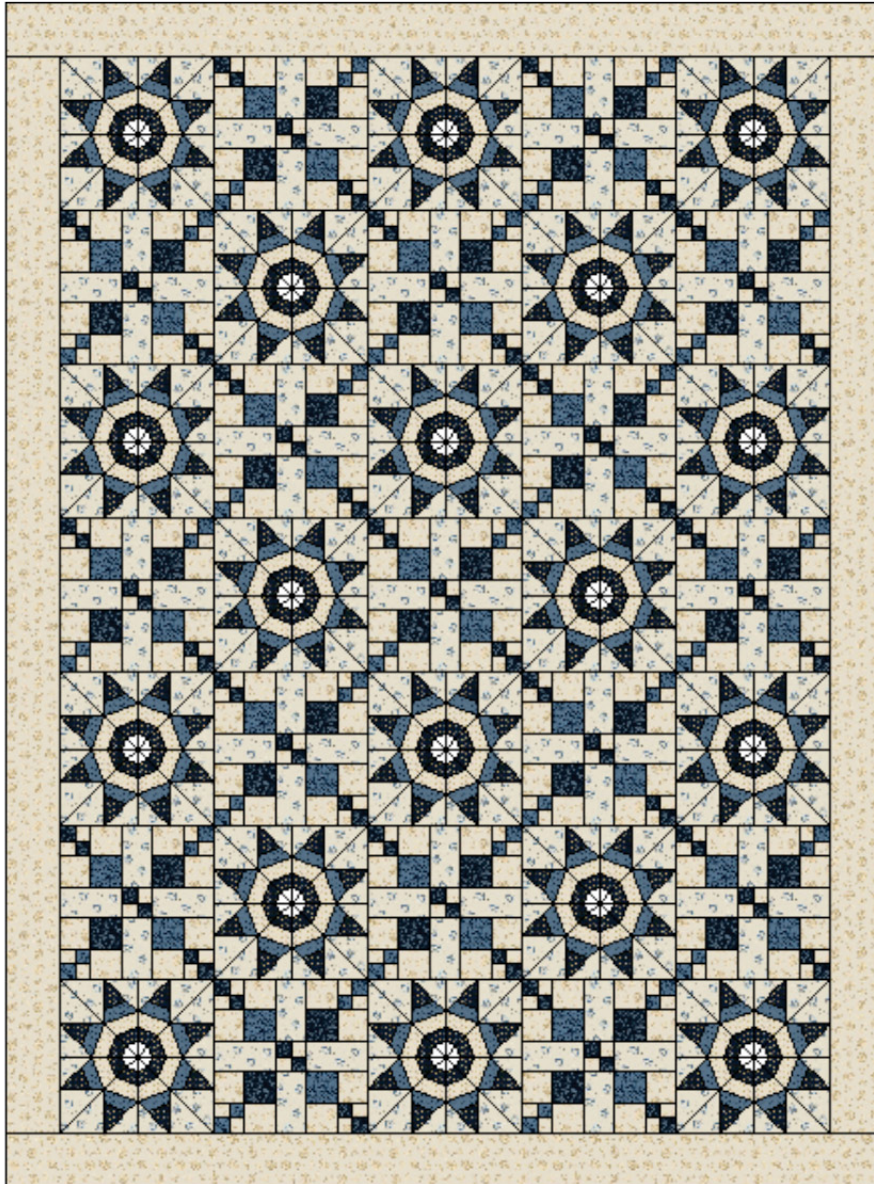
3. Sew rows together to complete quilt center.



Compass Star

Quilt Top Assembly

1. Outer border. Sew 2 (4" x 70 1/2") **E** strips to the opposite long sides of quilt center. Sew 2 (4" x 57 1/2") **E** strips to the remaining opposite short sides of quilt center to complete quilt top.



Quilting Instructions:

With the backing fabric laying taut, place batting and then quilt top to form quilt sandwich. Baste sandwich. Quilt as desired. Bind to finish quilt.

Unnamed

Key Block (7/20 actual size)

